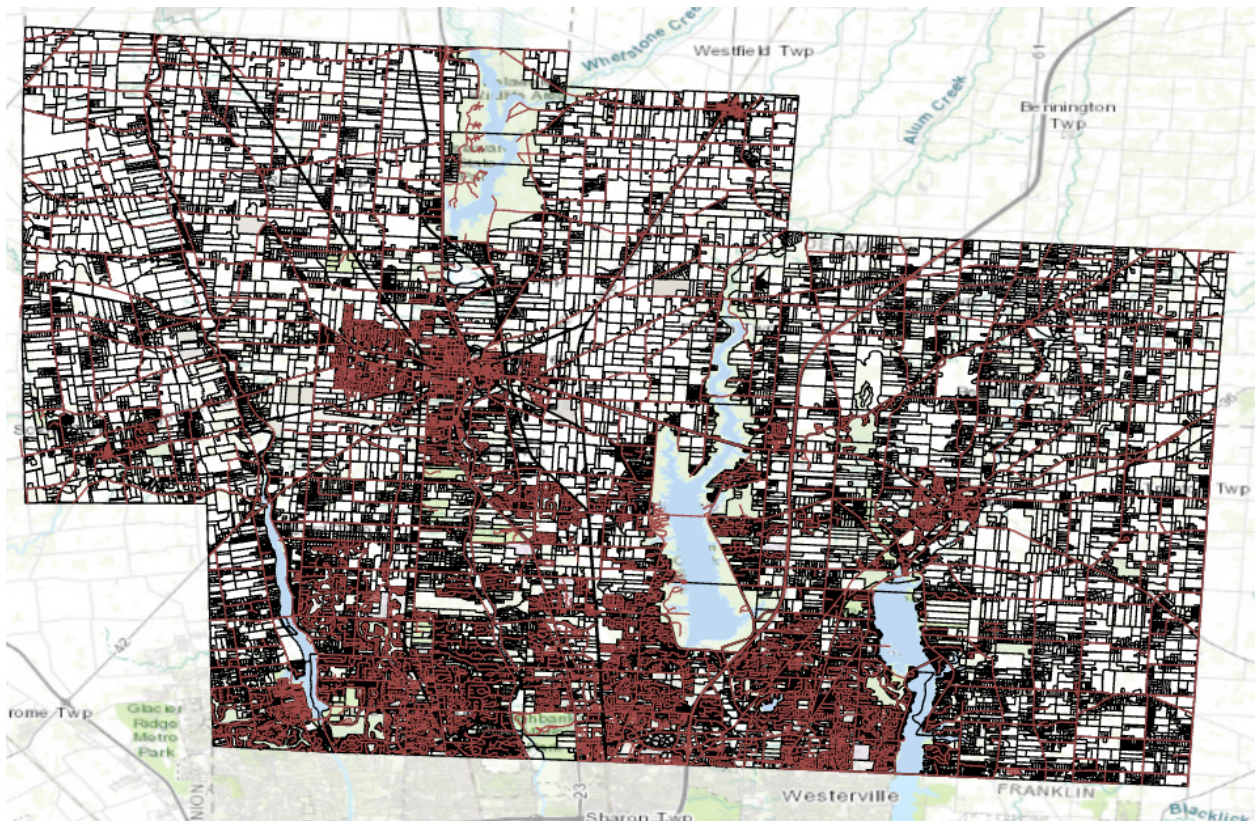


Data Files

- ❖ Zip Code
 - All zip codes within Delaware county.
- ❖ Recorded Document
 - Points represent recorded documents in the “Delaware County Recorder’s Plat Books”. Used as a way to locate miscellaneous documents in the DCR Office.
- ❖ School District
 - All school districts within the county.
- ❖ Map Sheet
 - All map sheets within the county.
- ❖ Farm Lot
 - Farm lots in the US Military and Virginia Military Survey Districts in the county. Used to identify all farm lots and their boundaries.
- ❖ Township
 - Consists of all the different townships (19) in the county.
- ❖ Street Centerline
 - Supports appraisal, emergency service usage, and roadway inventor on the status of the line depicting the center of pavement in public and private roads in the county.
- ❖ Annexation
 - Annexations and boundaries from 1853 to present day.
- ❖ Condo
 - All condominiums within the county.
- ❖ Subdivision
 - All subdivisions and condos recorded by the DCR office.
- ❖ Survey
 - Land surveys, updated on a daily basis.
- ❖ Dedicated ROW
 - All dedicated “right of way” polygons in the county.
- ❖ Tax District
 - All tax districts in the county.
- ❖ GPS
 - GPS monuments established from 1991-1997.
- ❖ Original Township
 - The original boundaries of the townships in the county before they were affected by Tax Districts.
- ❖ Imagery 2019
 - Aerial photographs of the county to be used by the general public and other organizations.
- ❖ Hydrology

- All major waterways within the county.
- ❖ Precinct
 - Outlines all of the voting precincts in the county.
- ❖ Parcel
 - All Parcels within the county.
- ❖ Public Land Survey System (PLSS)
 - Used to identify all PLSS and their boundaries as it pertains to the US Military and the Virginia Military Survey Districts.
- ❖ Address Point
 - No further information available
- ❖ Building Outline
 - All outlines for structures in the county as of 2018.
- ❖ Delaware County Contours
 - 2 foot contours for the county as of 2018.
- ❖ Delaware County E911 Data
 - No further information available



Waterways (blue), Parcels (black outline, 1 pt), and Street Centerlines (burgundy)