

Delaware Data Inventory:

Zip Code: zip code data and shows regions within same zip code - 51 records

Recorded Document: consists of points that represent recorded documents - 1,112 records

School District: shows all school districts in Delaware County - 23 records

Map Sheet: all map sheets within Delaware - 360 record

Farm Lot: all farm lots in both US military and Virginia military survey districts - 2,077 records

Township: shows geographic boundaries of each township - 60 records

Street Centerline: map of streets in Delaware county - 13,549 records

Annexation: Delaware county's annexations and conforming boundaries from 1853 to present - 405 records

Condo: all condominium units in delaware county - 1,966 records

Subdivision: all subdivisions and condos on record - 5,507 records

Survey: points of location of survey plat - 17,157 records

Dedicated ROW: all dedicated road right of way - 1,221 records

Tax District: all tax districts within delaware county - 61 records

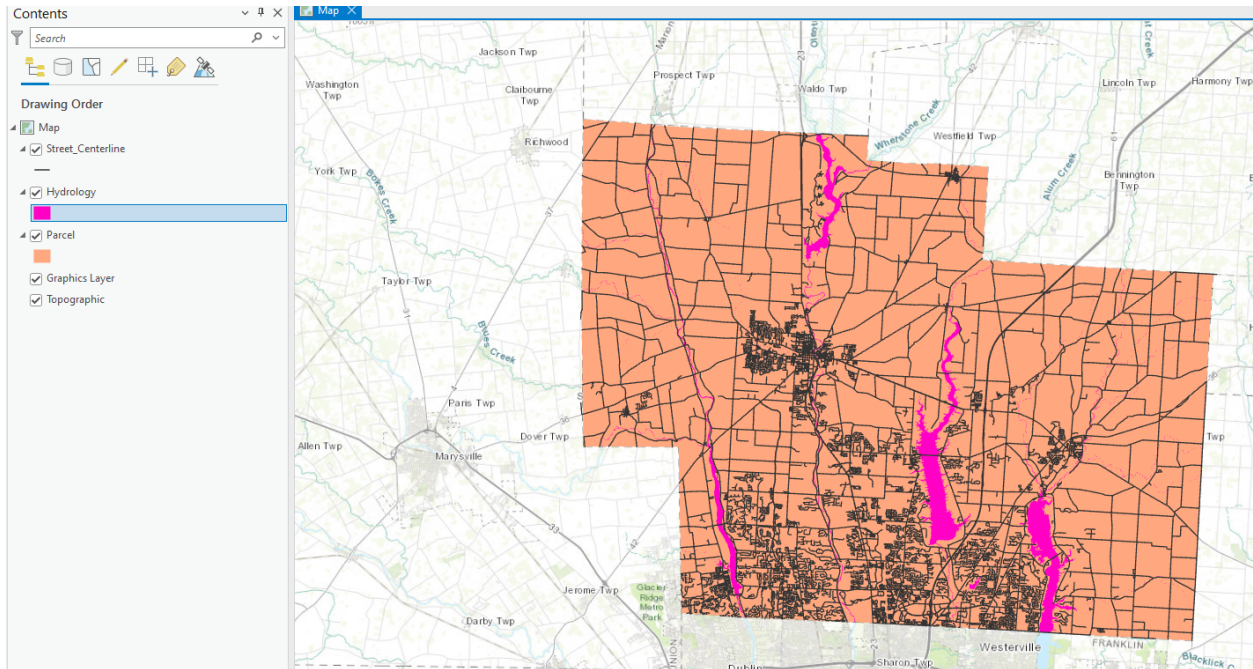
GPS: all GPS monuments that were established in 1991 and 1997 - 351 records

Parcels: all parcels in delaware county

Original Township: original boundaries of the township in Delaware County - 18 records

Hydrology: major waterways within Delaware - 24 records

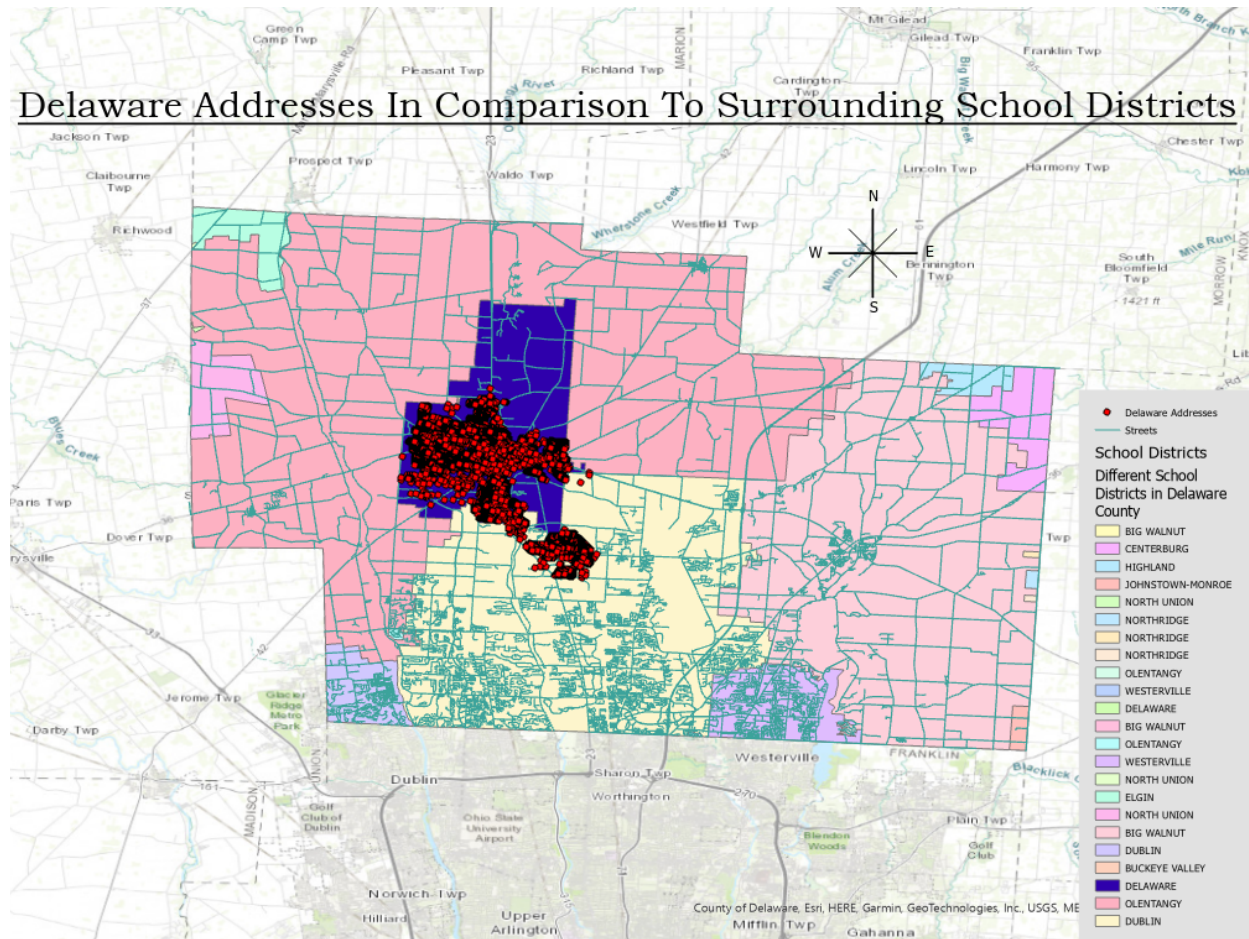
Precinct: precincts that determine each voting boundaries - 167 records



2. Making New Shape Files from Existing Shape Files

In my map I used the shape files: school districts, addresses, and streets to create the map. I created a new shape file from the existing shape file of addresses to focus on the residents of Delaware, I then turned off all the other residents not in the city of Delaware. I wanted to see how many different school districts surrounded the Delaware residents and how many other school districts are used by the residents. When looking at the Delaware residence we can see that a majority of them lay within the Delaware school district as expected, but they also leak into Olentangy and Big Walnut - which are the only two that touch Delaware school district. This can help when taking a look at funding for different school districts and the amount of residents in a certain area and how they are spread. The Delaware school district was also emphasized with a dark blue color to show where it lies and that it is a part of the main focus. I included a

key of all the school districts in pastel colors and used a contrasting color for the residence to stand out. I included streets to bring more dimension to the map. A compass and title was also added to bring more orientation and understanding to the viewer of the map.



3. Finding What's Inside

For my map I choose to use the data from the township boundaries and hydrology. I labeled all of the townships to enable the viewer to see which townships were present and outlined them in a dark red. I then made all the major waterways blue with a dark blue outline. I

put an emphasis on the city of Delaware with a bright blue border as that is where we are located in relation to distance from the major waterways. This sort of representation of where waterways are in which townships can be extremely important information. This can be for a number of reasons which involves health, ownership, and much more for the water ways. If there is pollution that keeps coming into the waterways we can use maps to see where it could possibly be coming from and get in contact with that city to share your concerns. I put a key in the corner with the difference in color representing hydrology and townships and a compass to orient the map. The title major waterways positions in townships speaks for itself.

