

DelCo Water Company: Olentangy Source Water & Watershed Protection Strategies

DelCo Water will be conducting a watershed program that will focus on the health of the Upper Olentangy River Watershed. It has been around 10 years since any program like this has been done on the Upper Olentangy River Watershed. This program focuses on the health assessment of several tributaries that empty into the Olentangy River as well as two different sites at the Olentangy River. This program includes six different sampling sites; Norris Run, Horseshoe Run, Delaware Run, Greenwood Lake, the Intake at the Delaware Treatment Plant, and the DelCo Intake Site. The six different sampling sites will be tested for nitrates, E. coli, pH level, blue-green algae and chlorophyll concentrations.

Figure 1 depicts the six sampling sites for the Upper Olentangy River Watershed. The Olentangy River is outlined in red.

Norris Run and Horseshoe Run are very similar tributaries in that they both run through heavily agricultural lands and small neighborhoods. Greenwood Lake is a reservoir that receives runoff from agricultural and urban settings and then flows into Sugar Run, which in turn flows into the Olentangy. Delaware Run travels directly through downtown Delaware and the Ohio Wesleyan Campus before emptying into the Olentangy River. The Delaware WTP Intake and the DelCo Water Intake both are directly on the Olentangy River.

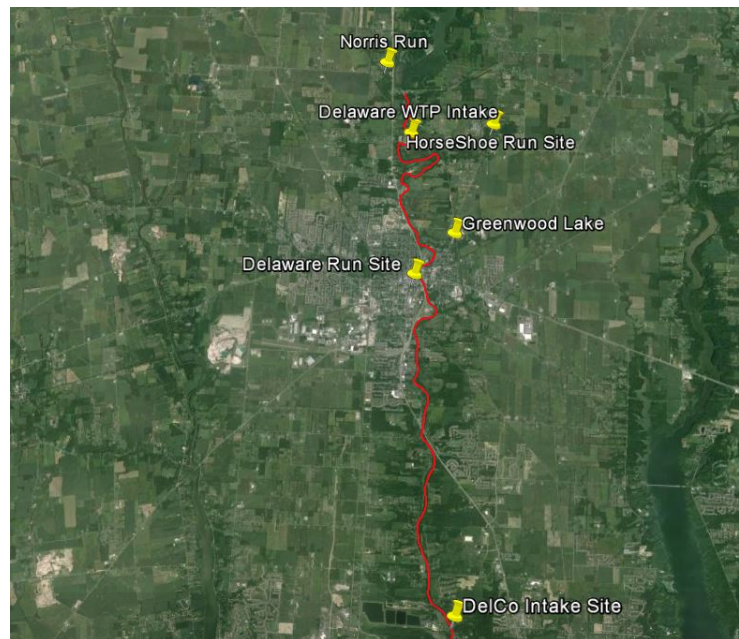


Figure 1: A Google Earth Image of the six sampling sites

Each site will be visited once a week and data will be collected using a data sonde. This data includes the water temperature, pH level, conductivity, algal growth and blue-green algae growth. Once every other week a water sample will be taken from the sampling site and additional tests will be performed.

This is a closer look at the area around Norris Run. The sampling site is located on Penry Road right off of U.S. 23. The site is located under a bridge along Penry Road

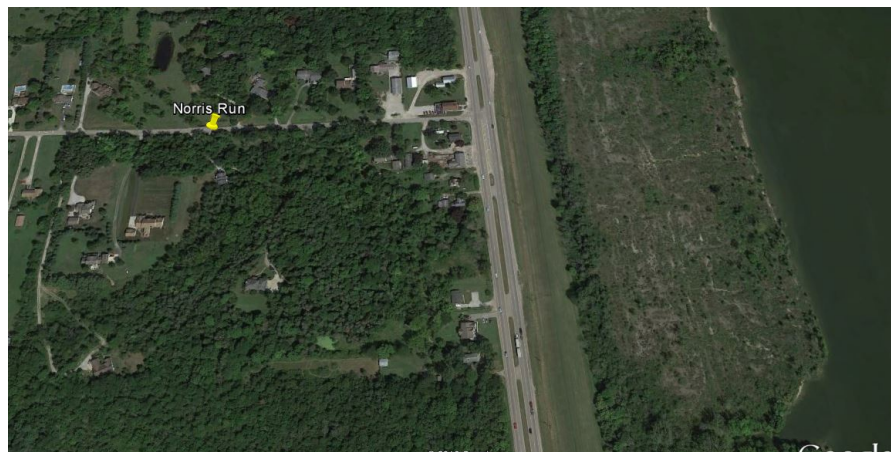


Figure 2: A Google Earth Image of Norris Run Site

Figure 3 shows a closer look at Greenwood Lake. Greenwood Lake is an inland reservoir along Sugar Run. The sampling site is on a bridge that passes over the center of the lake. Greenwood Lake is located along U.S. 42.



Figure 3: A Google Earth Image of the Greenwood Lake Site

Figure 4 shows the Delaware Water Treatment Plant Intake Structure, which is right along the Olentangy River. This site is located off of U.S 23.



Figure 4: A Google Earth Image of the Delaware Water Treatment Plant Intake

Figure 5 is an image of the Delaware Run Site that runs through the Ohio Wesleyan Campus. The sampling site is located on a bridge that is directly over Delaware Run. This site is located off of E William Street and S Union Street.



Figure 5: A Google Earth Image of the Delaware Run Site

Figure 6 shows a close up of the Horseshoe Run Site. The sampling will be done on a bridge that passes directly over Horseshoe Run. The sampling site is located right off of Horseshoe Road.



Figure 6: A Google Earth Image of the Horseshoe Run Site

Figure 7 shows the DelCo Water Intake site structure, which is located right along the Olentangy River. This site is located off of Olentangy River Road Near the intersection at Home Road.



Figure 7: A Google Earth Image of the DelCo Water Intake Site